

PR-LIVING

CATALOG 2021

Furniture Collection 2021



BELGIUM - 1960

PR-LIVING FURNITURE CATALOG

ABOUT

The PR-LIVING Group

PR-LIVING is an international group with head office in Belgium.

As a global player, PR is proud to be the supplier of many renowned architects, wholesalers and retailers worldwide and already present in more than 80 different countries.

PR has always been able to provide top notch quality and service due to their own factory representing best of Belgian design.

The PR-LIVING story starts in 1960 with Paul and Paula Rogiers. Wholesale was the first step in this family business that has its roots in Waregem. Already in these days, the family was clearly a trendsetter and a pioneering force in the Benelux furniture branch, this both for importing furniture as well as on the design level. The absolute showpiece of it all is the promotion of the Belgian furniture DNA all over the world.

In 1980 the first steps were taken towards Europe and furniture was also imported from various parts of the world: China, India, Italy and Portugal. At the 2000 millennium, sons Jean-Paul and Pierre Rogiers became co-owners.

*“Waregem
remains the
epicentre of
this company
that remains
faithful to its
Belgian roots.”*

Over the coming years, much more is on the agenda. Permanent innovation and (Belgian) design are the keywords. That is what they call starting the year with a bang! Over the coming five years, PR-LIVING intends to expand into (South-) America. The European headquarters and the showroom in Waregem —city of horses— remains the epicentre of this company that remains faithful to its Belgian roots.

Thanks to participating in the highest renowned international professional trade fairs in Brussels, Paris, Singapore, Cologne and Shanghai, the products designed by the Rogiers family are sold worldwide via the most prestigious decoration and furniture outlets. Meanwhile the company is already a global player with over 500 employees in more than 50 countries.



“Belgium,
the throbbing
heart of
PR-LIVING
ever since
1960”

BELGIUM

address Vijfseweg 84, Waregem
since 1960

The throbbing heart of PR-LIVING ever since 1960 to be found in Waregem, Flemish city of horses and still the basis of its Belgian roots. It is here that the European headquarters and the accompanying 1500 square metres showroom links EAST to WEST. Over the coming years, the knowhow will be transferred even more to the two factories in China and Romania where the design-unit is situated as well. Here, the daily management is ensured by brothers Jean-Paul and Pierre Rogiers and in this way, they continue the lifelong achievements of Paul and Paula Rogiers.





PR-LIVING
today we are located in Europe and Asia

HISTORY



- point of sales
- showroom
- office
- factory
- distribution (sq mtrs)

BELGIUM
corporate headquarters and showroom

ROMANIA
sales office, showroom and factory

CHINA
sales office, showroom and factory



PR-LIVING DESIGN STUDIO

PR-Living's design studio takes inspiration from worldwide inspirations & trends.

The leading force behind a lot of our new developments is our CEO, JP Rogiers. Together with his son Thibault he sets the direction PR Living wants to go.

The continuous flow of new developments wouldn't be possible without the support of our two motivated & very talented designers Stefano and Andy.

DESIGNED BY HEART

PR-LIVING



Jean-Paul Rogiers
CEO

JP has been fascinated by interior design all his life. He started working in this business when he was 18 years old and has been in the furniture industry since.

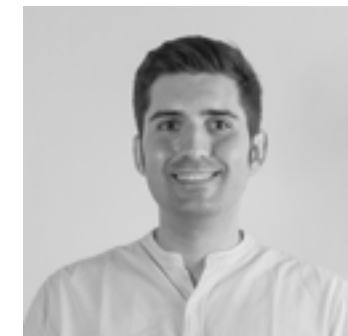
JP draws his inspiration from his many travels throughout Europe and Asia



Thibault Rogiers
Design & Product development

Thibault joined PR-Living in 2012, with little experience in furniture or manufacturing he moved to China to support the team in Shanghai.

His knowledge was earned during the many days, weeks, years he spent in the factories in China and Romania. Today this is still the part of the job he loves most. To see an idea become reality to the reactions of the first customers.

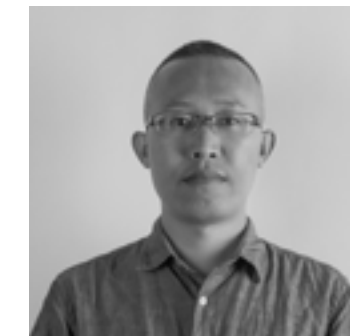


Stefano Prevosti
Designer

Stefano is from Italy and he graduated in Industrial Design at the Design School in Denmark.

In 2017 Stefano exhibited at Milan Design Week and he has been selected by the FSC Design Award in Copenhagen.

Stefano has extensive experience and was working for danish and italian design brands prior to joining the PR-Living team.



Andy Zuo
Designer

Andy is from China. He has been in the furniture industry for over 10 years and has extensive experience in product development.

Andy makes sure that ideas are executed perfectly and is the link between the drawing board and the factories.



Jochem Wijnbergen
Design & Product development

Jochem is a third-generation cabinet maker. The love for creating top-notch furniture pieces was picked up by him and remained within the family. His sense of craftsmanship started when he followed his father in the workshop, which moved on to graduation in Carpentry and Production Engineering in the Netherlands. After several R&D Management roles globally at well-known furniture companies, he started his own studio in 2016.

INDEX

FURNITURE

AMALFI	92
BALI 01	64
BERGEN	93
CHIMAY DT	81
CHIMAY 01	47
CONNECTICUT 01/02/03/06/07/08	41
CONNECTICUT 04/05	43
COSMO 01/02/03	66
DAMO 01/02/03	39
DAMO 04/04-1	38
ENDO 01	75
ENDO 02	76
FERRO 01/04	28
FERRO 02/06	29
FORLI 01/02	50
JANE	104
JULIETTE 01/06-1	20
JULIETTE 03/03-2	21
JULIETTE 04	22
JULIETTE 07	23
KASPER	80
LIBRA	69
LUCCA	96
MARS 01	73
MIA 05/06	67
MILO 01/02/03	51
MILTON 01/02	68
MISTRAL	94
MODENA 01-1/2/4	56
MODENA 02/03/04	72
MONTECRISTO 01/02	18

MONTECRISTO 03	19
MONZA 01	35
MONZA 02/03	65
MORI 01	74
NABU	61
NOAH	97
NOMAD	36
ORESUND 01/02	55
ORVAL	98
PADOVA	102
PADOVA S	103
PALERMO 01/02	31
PALERMO 03	30
PICO 01/02	54
PLUTO 01/02	60
PORTO (RECTANGULAR)	86
PORTO (ROUND)	87
PRATO 46	46
PRATO 56	99
PRATO 59	26
PRATO 60/61	27
PRATO 64	45
PRATO DUO 01/03/04	44
PRISMA 01/02	57
RIVA	37
ROBUSTO	100
ROCHEFORT	101
ROTTERDAM	83
SYMPHONY	95
WATOU 04/05	82
ZENO	34

CARPETS

BELIZE	108
DJOBIE	110-111
INK	116
JADE	109
LANA	113
ORIGINS	112
RHAPSODY	114
SIERRA	115

CONTEMPORARY





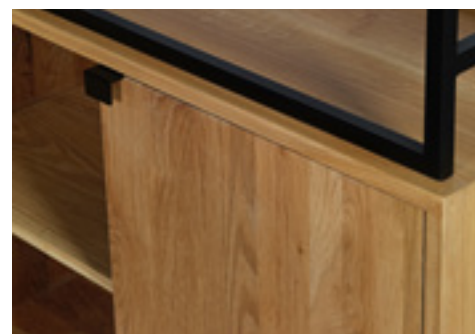
© PR-LIVING STUDIO

MONTECRISTO 01/02

model modular cabinet
material wood / metal
color fjord oak / black

single cabinet 01
90 x 40 x 220 H

double cabinet 02
180 x 40 x 220 H



© PR-LIVING STUDIO

MONTECRISTO 03

model sideboard 03
material wood / metal
color fjord oak / black

sideboard 03
220 x 45 x 80 H





© PR-LIVING STUDIO

JULIETTE 01/06-1

model cabinet 01
material wood / metal
color fjord oak / black

cabinet 01
135 x 45 x 113 H

shelf 06-1
52 x 45 x 202 H



JULIETTE 03/03-2

model bar cabinet 03
material wood / metal
color fjord oak / black

bar cabinet 03
90 x 45 x 130 H

TV cabinet 03-2
160 x 45 x 67 H



© PR-LIVING STUDIO





© PR-LIVING STUDIO

JULIETTE 04

model TV cabinet 04
material wood / metal
color fjord oak / black

TV cabinet 04
 225 x 45 x 67 H



© PR-LIVING STUDIO

JULIETTE 07

model sideboard 07
material wood / metal
color fjord oak / black

sideboard 07
 220 x 45 x 85 H







© PR-LIVING STUDIO

PRATO 59

model sideboard 59
material wood / metal
color fjord oak / black

sideboard 59
 200 x 45 x 85 H



© PR-LIVING STUDIO

PRATO 60/61

model cabinet 60
material wood / metal
color fjord oak / black

cabinet 60
 90 x 45 x 110 H

TV cabinet 61
 170 x 50 x 55 H





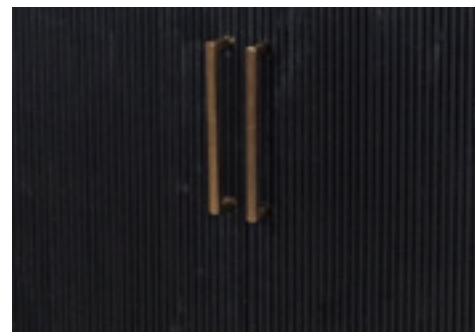
© PR-LIVING STUDIO

FERRO 01/04

model cabinet 01
material wood / metal
color black / gold

cabinet 01
 90 x 40 x 190 H

sideboard 04
 90 x 45 x 105 H



© PR-LIVING STUDIO

FERRO 02/06

model sideboard 06
material wood / metal
color black / gold

sideboard 02
 220 x 45 x 80 H

sideboard 06
 150 x 45 x 55 H





© PR-LIVING STUDIO



© PR-LIVING STUDIO

PALERMO 03

model cabinet 03
material veneer wood / metal
color fjord oak / black

cabinet 03
 100 x 45 x 150 H



PALERMO 01 / 02

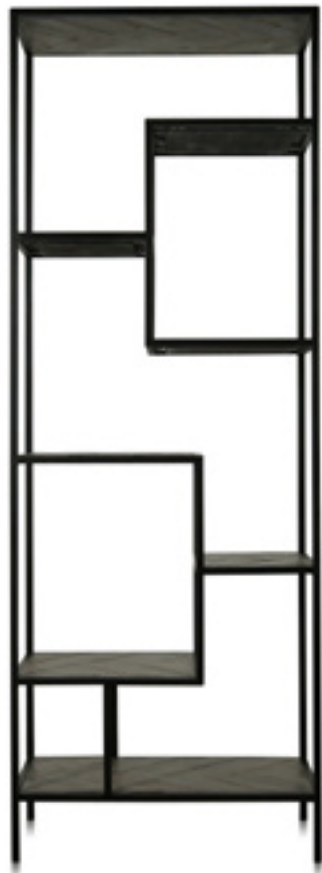
model sideboard 02
material veneer wood / metal
color fjord oak / black

TV cabinet 01
 170 x 50 x 60 H

sideboard 02
 220 x 45 x 80 H







© PR-LIVING STUDIO

ZENO

model shelf
material wood / metal
color parquet heritage oak / black

shelf
 80 x 40 x 220 H
 90 x 40 x 190 H



MONZA 01

model shelf 01
material wood / metal
color fjord / black

shelf 01
 100 x 40 x 190 H



© PR-LIVING STUDIO





© PR-LIVING STUDIO



© PR-LIVING STUDIO

NOMAD

model shelf
material metal
color black

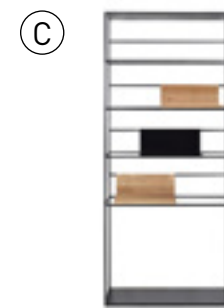
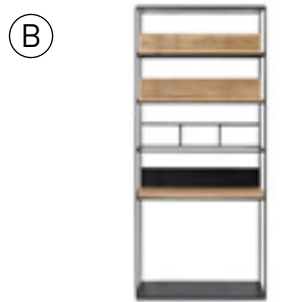
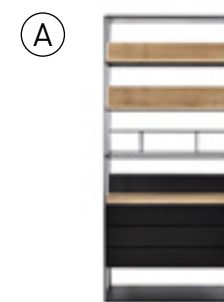
shelf
 90 x 42 x 180 H
 90 x 42 x 200 H
 90 x 42 x 220 H



RIVA

model modular cabinet
material wood / metal
color fjord oak / black

A **shelf 01**
 100 x 42 x 220 H
B **shelf 02**
 150 x 42 x 220 H
C **shelf 03**
 100 x 42 x 220 H
D **shelf 08**
 100 x 42 x 220 H





© PR-LIVING STUDIO

DAMO 04/04-1

model shelf 04-1
material wood / metal
color heritage oak / black

shelf 04
 42 x 42 x 210 H

shelf 04-1
 110 x 40 x 210 H
 110 x 40 x 170 H
 110 x 40 x 80 H



DAMO 01/02/03

model coffee table 01
material wood / metal
color fjord oak / black

coffee table 01
 150 x 90 x 40 H

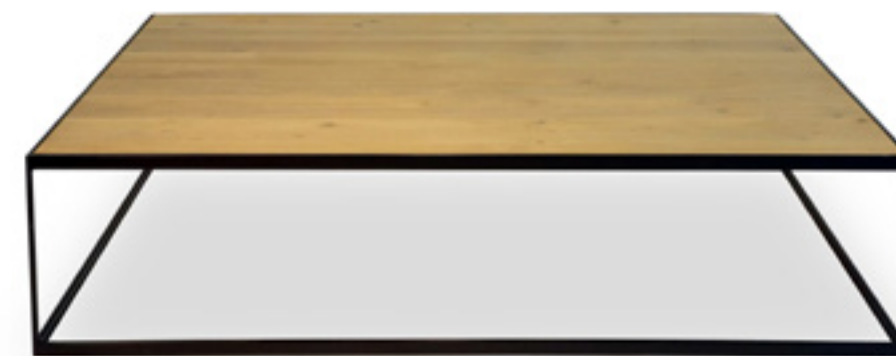
side table 02
 55 x 55 x 45 H

console 03
 160 x 40 x 80 H

coffee table 01-90 (ceramics)
 90 x 90 x 40 H

coffee table 01-120 (ceramics)
 120 x 60 x 40 H

side table 02-1 (ceramics)
 62 x 62 x 45 H



© PR-LIVING STUDIO



© PR-LIVING STUDIO

CONNECTICUT 01/02/03/ 06/07/08

model coffee table 06
material stone / metal
color bluestone / black

side table 01 60 x 60 x 45 H
coffee table 06 (ceramics) 120 x 60 x 40 H

coffee table 02 130 x 70 x 40 H
coffee table 07 (ceramics) 90 x 90 x 40 H

console 03 160 x 46 x 86 H
side table 08 (ceramics) 60 x 60 x 45 H





CONNECTICUT 04/05

model shelf 05
material wood / metal
color heritage oak / black

TV cabinet 04
 160 x 45 x 60 H

shelf 05
 90 x 35 x 220 H
 90 x 35 x 170 H
 90 x 35 x 80 H



© PR-LIVING STUDIO





© PR-LIVING STUDIO

PRATO DUO 01/03/04

model coffee table 04
material wood / metal / glass
color fjord oak / black

coffee table 04
180 x 120 x 40 H
120 x 90 x 40 H

side table 03
60 x 60 x 45 H

console 01
160 x 40 x 80 H



© PR-LIVING STUDIO

PRATO 64

model coffee table 64
material wood / metal / glass
color antique elm / stainless steel (64)

coffee table 64 (set of 2)
100 x 100 x 45 H





© PR-LIVING STUDIO

PRATO 46

model coffee table 46
material wood / metal / glass
color natural heritage oak / black

coffee table 46-1 (set of 2)
 Ø 110 x 42 H

coffee table 46-2 (set of 2)
 Ø 90 x 42 H



© PR-LIVING STUDIO

CHIMAY 01

model coffee table 01
material wood / metal
color black stained oak / black

coffee table 01
 150 x 50 x 35 H







© PR-LIVING STUDIO



© PR-LIVING STUDIO

FORLI 01/02

model coffee table 01
material wood / metal / glass
color fjord oak / black

coffee table 01
120 x 60 x 40 H
90 x 90 x 40 H

side table 02
45 x 45 x 45 H
55 x 55 x 55 H



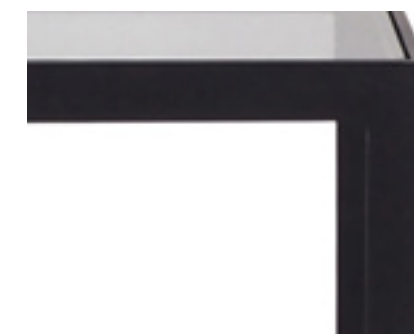
MILO 01/02/03

model coffee table 01
material wood / metal / glass
color natural heritage oak / black

coffee table 01
150 x 60 x 46 H

side table 02
60 x 65 x 55 H

console 03
160 x 45 x 76 H







© PR-LIVING STUDIO

PICO 01/02

model coffee tables set
material wood / metal
color black stained oak / black

coffee table 01
 Ø 70 x 38 H

coffee table 02
 Ø 100 x 45 H



© PR-LIVING STUDIO

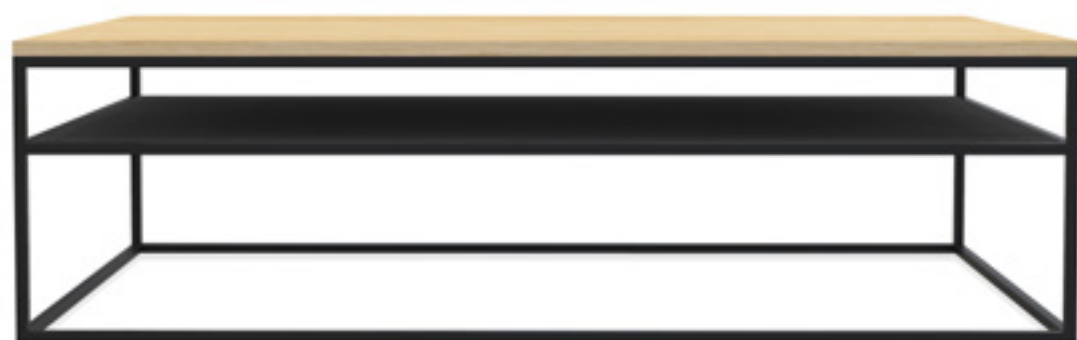
ORESUND 01/02

model coffee table 01
material wood / metal
color heritage oak / black

coffee table 01
 Ø 90 x 40 H

side table 02
 Ø 50 x 45 H





© PR-LIVING STUDIO

MODENA 01 1/2/4

model coffee table 01-2
material wood / metal
color fjord oak / black

side table 01-1
50 x 50 x 50 H

coffee table 01-2
100 x 100 x 40 H
140 x 70 x 40 H

console 01-4
160 x 40 x 84 H



© PR-LIVING STUDIO

PRISMA 01/02

model coffee table 01
material metal / glass
color black

coffee table 01
140 x 90 x 40 H
150 x 100 x 40 H

side table 02
60 x 60 x 45 H







© PR-LIVING STUDIO

PLUTO 01/02

model coffee tables set
material marble / metal
color white / black

coffee table 01
 Ø 100 x 40 H

side table 02
 Ø 50 x 45 H

options stone
 oak



© PR-LIVING STUDIO

NABU 01

model coffee table 01
material stone / metal
color terrazzo earth / black

coffee table 01
 90 x 90 x 40 H







© PR-LIVING STUDIO

BALI 01

model coffee table
material metal / glass
color black

coffee table 01
100 x 100 x 40 H



MONZA 02/03

model coffee tables set
material wood / metal / glass
color heritage oak / black

side table 02
Ø 50 x 50 H

coffee table 03
Ø 85 x 40 H



© PR-LIVING STUDIO





© PR-LIVING STUDIO

COSMO 01/02/03

model coffee tables set
material wood / metal
color fjord oak / black

coffee table 01
Ø 40 x 53 H

coffee table 02
Ø 60 x 48 H

coffee table 03
Ø 80 x 43 H



© PR-LIVING STUDIO

MIA 05/06

model coffee tables set
material metal
color black

side table 05
Ø 50 x 50 H

coffee table 06
Ø 85 x 50 H





© PR-LIVING STUDIO

MILTON 01/02

model coffee tables set
material stone / metal
color white marble / black

side table 01
Ø 45 x 45 H

coffee table 02
Ø 100 x 45 H



© PR-LIVING STUDIO

LIBRA

model side table
material wood / metal
color heritage oak / black

side table
40 x 50 x 54 H







© PR-LIVING STUDIO

MODENA 02/03/04

model coffee & side table set
material metal
color black

- A** **sofa table 02**
50 x 35 x 70 H
30 x 40 x 70 H
- B** **modena square 03**
80 x 80 x 46 H
60 x 60 x 38 H
40 x 40 x 40 H
- C** **modena round 04**
Ø 40 x 55 H
Ø 80 x 35 H
Ø 60 x 50 H

Ⓐ



Ⓑ



Ⓒ



MARS 01

model mirror
material metal
color black

mirror 01
70 x 5 x 120 H
70 x 5 x 180 H
70 x 5 x 200 H



© PR-LIVING STUDIO





© PR-LIVING STUDIO

MORI 01

model mirror
material metal
color black

mirror 01
 60 x 4 x 120 H
 60 x 4 x 180 H
 80 x 4 x 200 H



© PR-LIVING STUDIO

ENDO 01

model mirror
material wood / metal
color fjord oak / black

mirror
 70 x 3 x 120 H





© PR-LIVING STUDIO

ENDO 02

model mirror
material wood / metal
color fjord oak / black

mirror
 90 x 2 x 120 H



DINING TABLES



© PR-LIVING STUDIO

KASPER

model dining table
material wood
color fjord oak

dining table
 200 x 100 x 77 H
 220 x 100 x 77 H
 240 x 100 x 77 H
 280 x 100 x 77 H



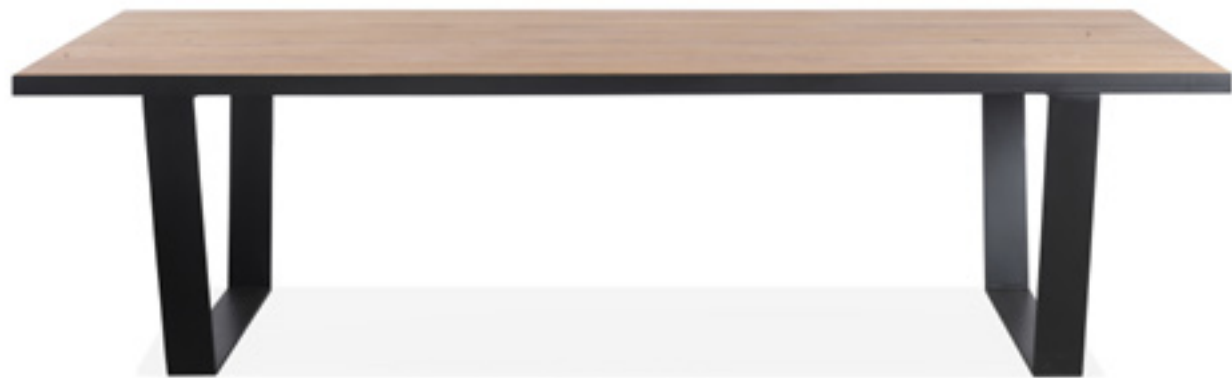
© PR-LIVING STUDIO

CHIMAY DT

model dining table
material wood / metal
color blackstained oak / black

dining table
 200 x 100 x 77 H
 220 x 100 x 77 H
 240 x 100 x 77 H
 280 x 100 x 77 H





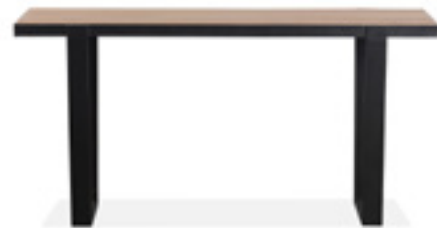
© PR-LIVING STUDIO

WATOU 04/05

model dining table 04
material wood / metal
color fjord oak / black

dining table 04
 200 x 100 x 77 H
 220 x 100 x 77 H
 240 x 100 x 77 H
 260 x 110 x 77 H
 280 x 110 x 77 H

console 05
 160 x 40 x 80 H



© PR-LIVING STUDIO

ROTTERDAM

model dining table
material wood / metal
color parquet / black

dining table oval
 250 x 114 x 76 H







© PR-LIVING STUDIO

PORTO

model dining table
material wood / metal / glass
color black smoked oak / black

dining table
 260 x 110 x 77 H



© PR-LIVING STUDIO

PORTO

model dining table
material wood / metal / glass
color black smoked oak / black

dining table
 Ø 160 x 77 H




CREATE YOUR TABLE

YOU CHOOSE


TABLE TOP

OVAL	200 x 100 x 4 H
	220 x 100 x 4 H
	240 x 100 x 4 H
	280 x 100 x 4 H
RECTANGULAR	200 x 100 x 4 H
	220 x 100 x 4 H
	240 x 100 x 4 H
	280 x 100 x 4 H

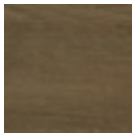
COLORS TOP



OAK
FJORD



OAK
HERITAGE



OAK
SMOKED



OAK
RECLAIMED



OAK
BLACK

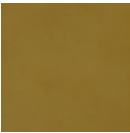
LEG COLOR



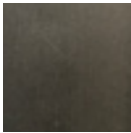
METAL
WHITE



METAL
BLACK



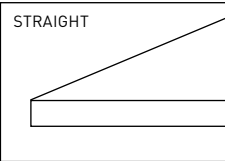
METAL
GOLD



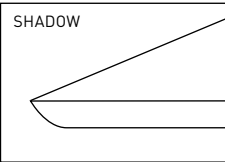
METAL
BLANK

FINISHING

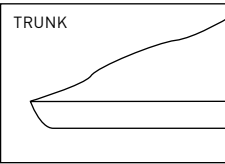
STRAIGHT



SHADOW



TRUNK



MODEL

- AMALFI
- BERGEN
- JANE
- LUCCA
- MISTRAL
- NOAH
- ORVAL
- PRATO
- PADOVA
- PADOVA S
- ROBUSTO
- ROCHEFORT
- SYMPHONY



© PR-LIVING STUDIO



© PR-LIVING STUDIO

AMALFI

model dining table
table top rectangular SHADOW fjord
table leg AMALFI white
material solid oak / metal



BERGEN

model dining table
table top rectangular SHADOW heritage
table leg BERGEN gold
material solid oak





© PR-LIVING STUDIO

MISTRAL

model dining table
table top rectangular STRAIGHT fjord
table leg MISTRAL black
material solid oak / metal



© PR-LIVING STUDIO

SYMPHONY

model dining table
table top rectangular STRAIGHT fjord
table leg SYMPHONY black
material solid oak / metal





© PR-LIVING STUDIO

LUCCA

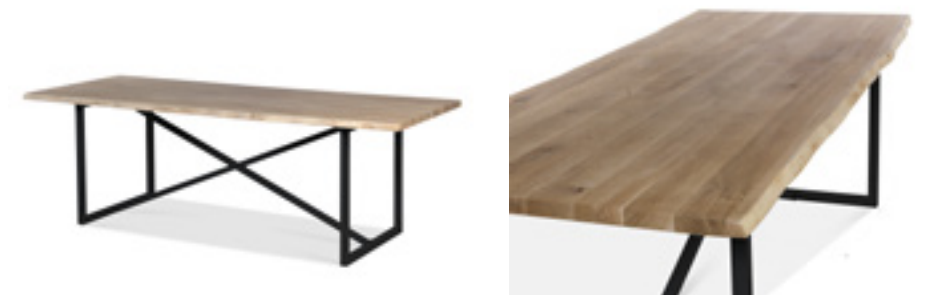
model dining table
table top rectangular STRAIGHT heritage
table leg LUCCA black
material solid oak



© PR-LIVING STUDIO

NOAH

model dining table
table top rectangular TRUNK fjord
table leg NOAH black
material solid oak / metal





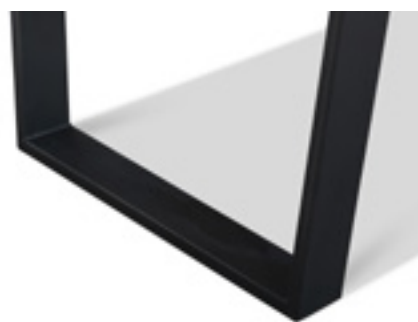
© PR-LIVING STUDIO



© PR-LIVING STUDIO

ORVAL

model dining table
table top rectangular STRAIGHT fjord
table leg ORVAL black
material solid oak / metal



PRATO 56

model dining table
table top rectangular STRAIGHT fjord
table leg PRATO 56 black
material solid oak / metal





© PR-LIVING STUDIO



© PR-LIVING STUDIO

ROBUSTO

model dining table
table top rectangular STRAIGHT fjord
table leg ROBUSTO white
material solid oak / metal



ROCHEFORT

model dining table
table top rectangular STRAIGHT heritage
table leg ROCHEFORT black
material solid oak / metal





© PR-LIVING STUDIO

PADOVA

model dining table
table top rectangular TRUNK fjord
table leg PADOVA black
material solid oak / metal



© PR-LIVING STUDIO

PADOVA S

model dining table
table top round STRAIGHT fjord
table leg PADOVA S white
material solid oak / metal

table top

round
 Ø 160 x 77 H

square
 160 x 160 x 77 H





© PR-LIVING STUDIO

JANE

- model** bistro table
- tabe top** rectangular STRAIGHT heritage
- table leg** JANE black
- material** solid oak / metal

-

table top rectangular

- 110 x 70 x 4 H
- 120 x 80 x 4 H

table top square

- 70 x 70 x 4 H
- 80 x 80 x 4 H

table top round

- 60 x 60 x 4 H
- 70 x 70 x 4 H

leg

- 46 x 46 x 72 H



CARPETS



BELIZE

model 300 x 400
material 100% superior wool
color BO/001 dark blue



BO/001 DARK BLUE



BO/002 BEIGE BLUE



BO/100 BLUE



BO/500 BEIGE

sizes 160 x 230
200 x 300
240 x 340
300 x 400

quality natural product
anti slip
double backing
made in Belgium



JADE

model 240 x 340
material 100% superior wool
color BO/011 blue



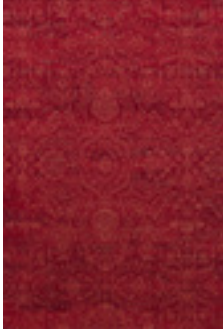
BO/011 BLUE



BO/012 BEIGE



BO/110 BEIGE



BO/301 RED

sizes 160 x 230
200 x 300
240 x 340

quality natural product
anti slip
double backing
made in Belgium



DJOBIE

model 250 x 345
material 100% superior wool
color BO/021 beige



BO/021 BEIGE



BO/621 BEIGE BLUE

sizes 170 x 235
200 x 295
250 x 345

quality natural product
anti slip
double backing
made in Belgium



DJOBIE

model 200 x 235
material 100% superior wool
color BO/022 blue



BO/022 BLUE



BO/500 BLUE

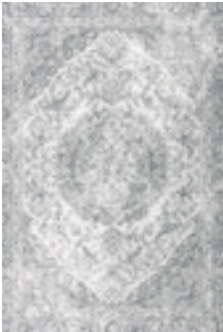
sizes 170 x 235
200 x 295
250 x 345

quality natural product
anti slip
double backing
made in Belgium

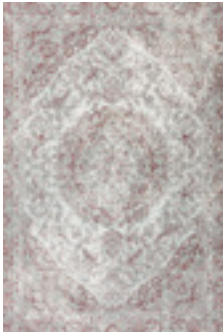


ORIGINS

model 250 x 350
material 100% superior wool
color BO/920 grey



BO/920 GREY



BO/310 RUBY

sizes 125 x 180
170 x 240
200 x 300
250 x 350

quality natural product
anti slip
double backing
made in Belgium



LANA

model 240 x 340
material 100% superior wool
color BO/917 light grey



BO/100 BEIGE



BO/917 LIGHT GREY



BO/927 GREY

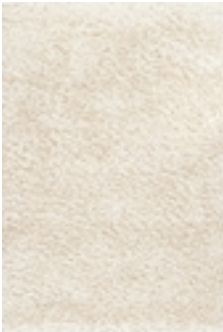
sizes 160 x 230
200 x 250
200 x 290
240 x 340

quality natural product
anti slip
double backing
made in Belgium



RHAPSODY

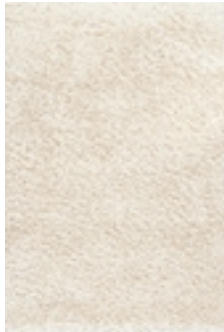
model 200 x 230
material wool & polyester
color BO/031 white



BO/031 WHITE



BO/032 GREY



BO/100 BEIGE



BO/906 GREY

sizes 160 x 230
200 x 290
240 x 340
Ø 160
Ø 200

quality anti slip
double backing
made in Belgium



BO/100 WHITE



BO/906 GREY



SIERRA

model 200 x 290
material polyester
color BO/201 ruby



BO/201 RUBY



BO/901 GREY

sizes 160 x 230
200 x 290
240 x 340

quality anti slip
double backing
made in Belgium

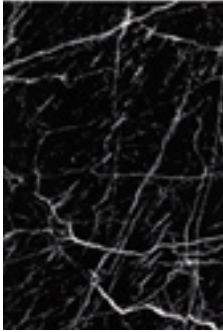


INK

model 200 x 290
material decolan
color BO/04 stripe



BO/04 STRIPE

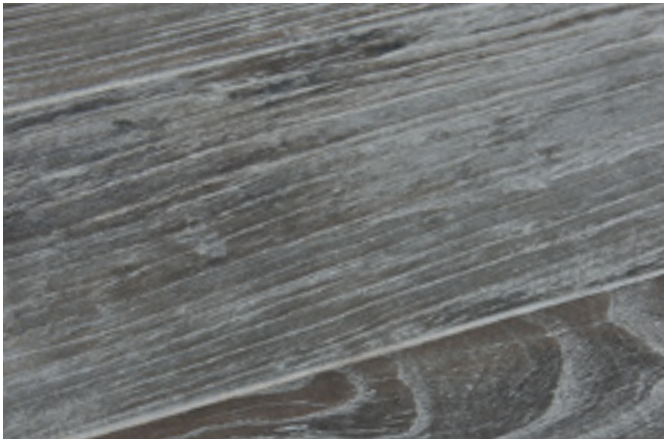


BO/11 MARBLE

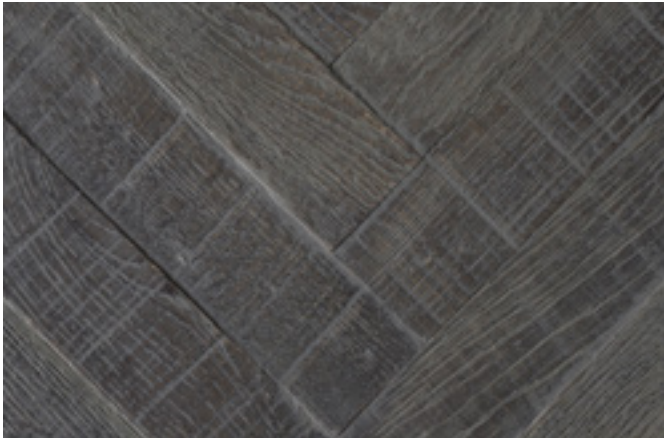
sizes 160 x 230
200 x 290
240 x 330

quality anti slip
double backing
made in Belgium

WOOD OPTIONS



HERITAGE OAK (A/B)



PARQUET OAK (A/B)



BLACK OAK (A/B)



PARQUET OAK FJORD (A/B)

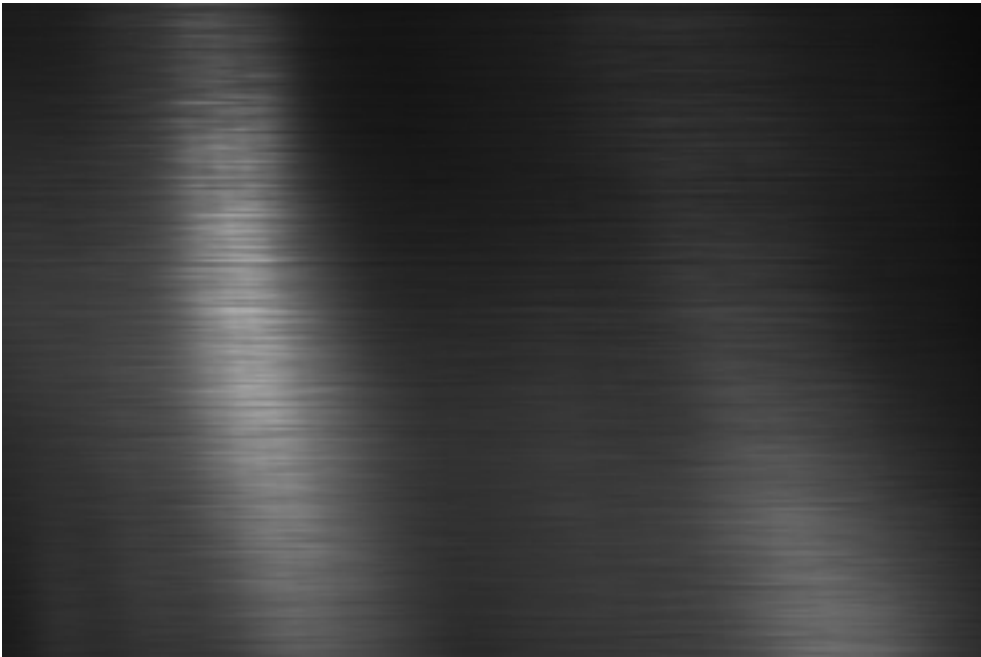


FJORD OAK (A/B)



RECLAIMED OAK (B)

METAL OPTIONS



BLACK METAL (A/B)



GOLD METAL (A/B)

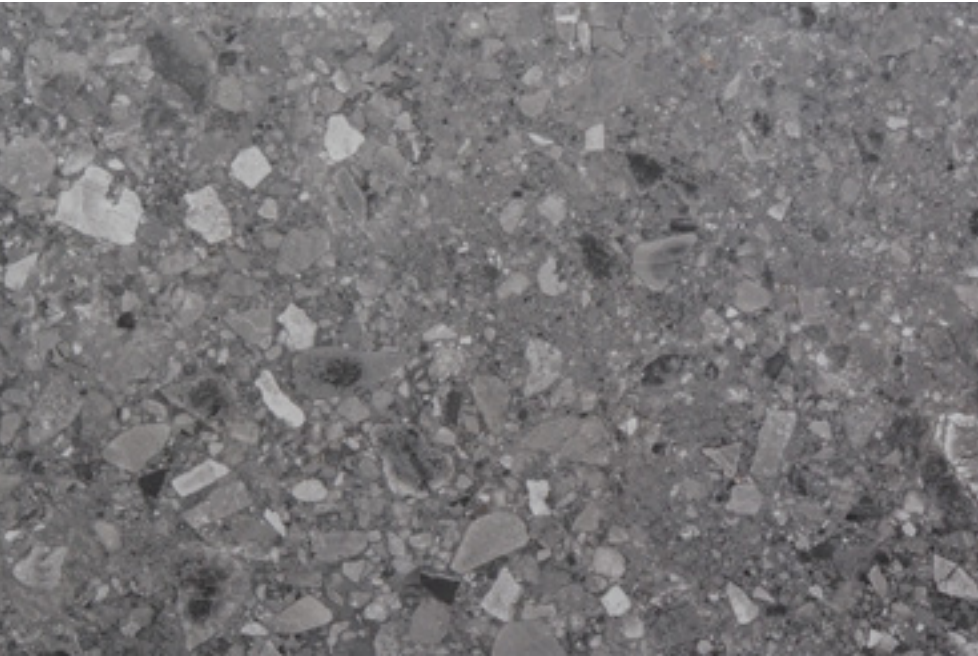


WHITE METAL (A/B)



BLANK METAL (B)

CERAMIC OPTIONS



TERRAZZO GREY CERAMIC (A)
(not available in dimension 90 x 90)



REVERSO EARTH CERAMIC (A)



CARRARA CERAMIC (A)
(not available in dimension 60 x 60)



REVERSO ANTHRACITE CERAMIC (A)

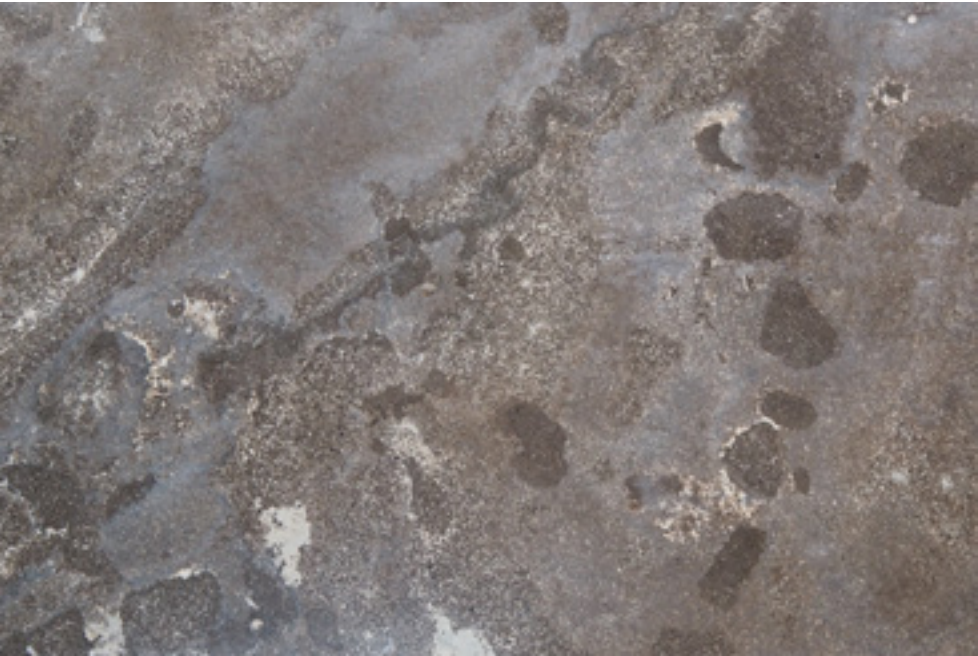
STONE OPTIONS



BLACK MARBLE (A)



WHITE MARBLE (A)

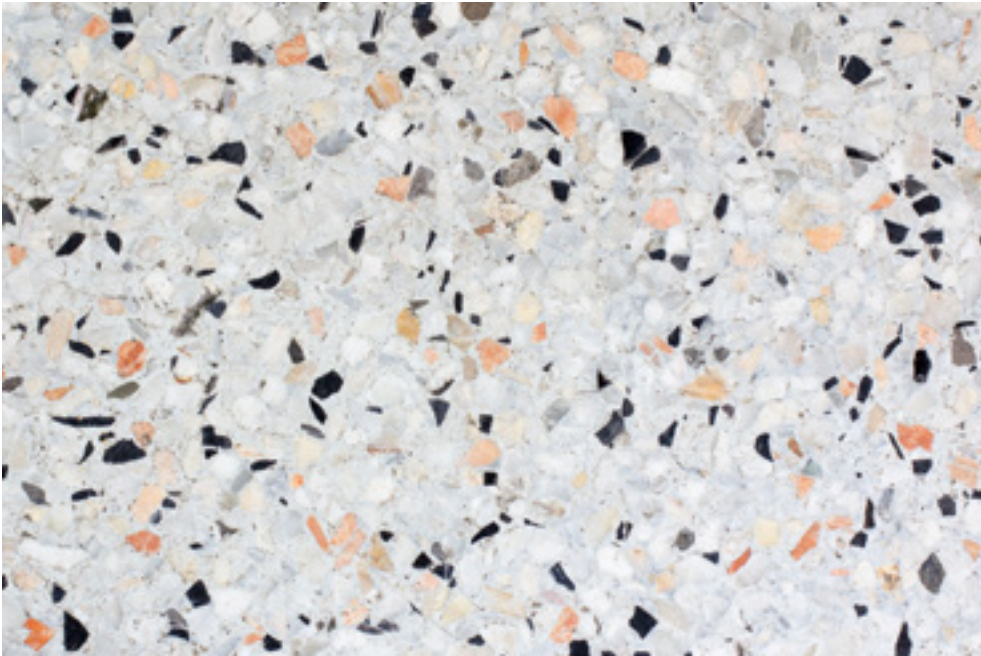


BLUESTONE (A)

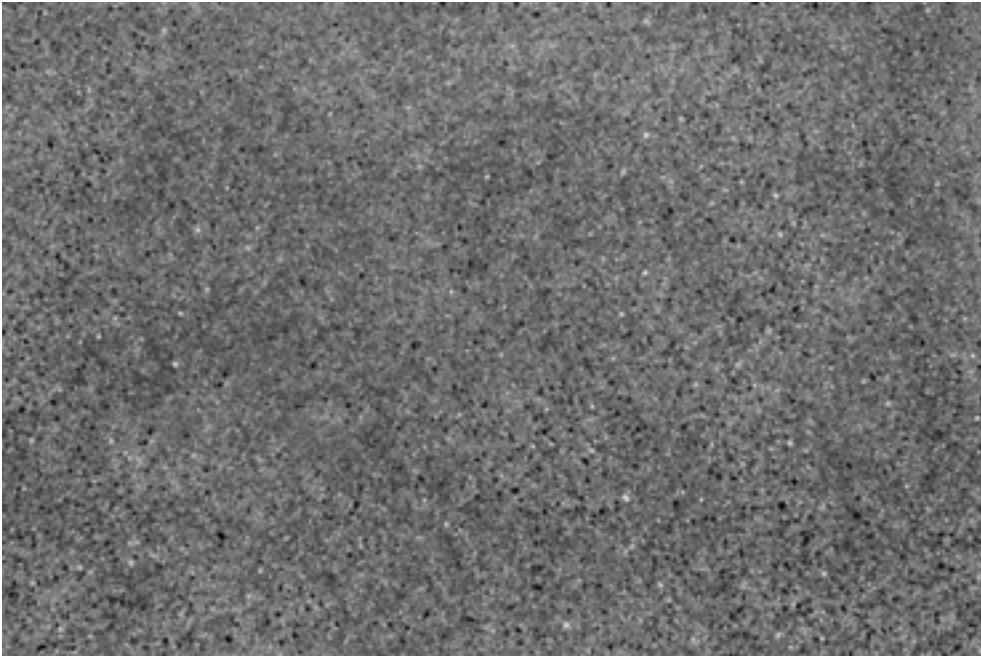
TERRAZZO OPTIONS

TERRAZZO OPTIONS
ONLY AVAILABLE IN
DAMO / CONNECTICUT

MATERIALS



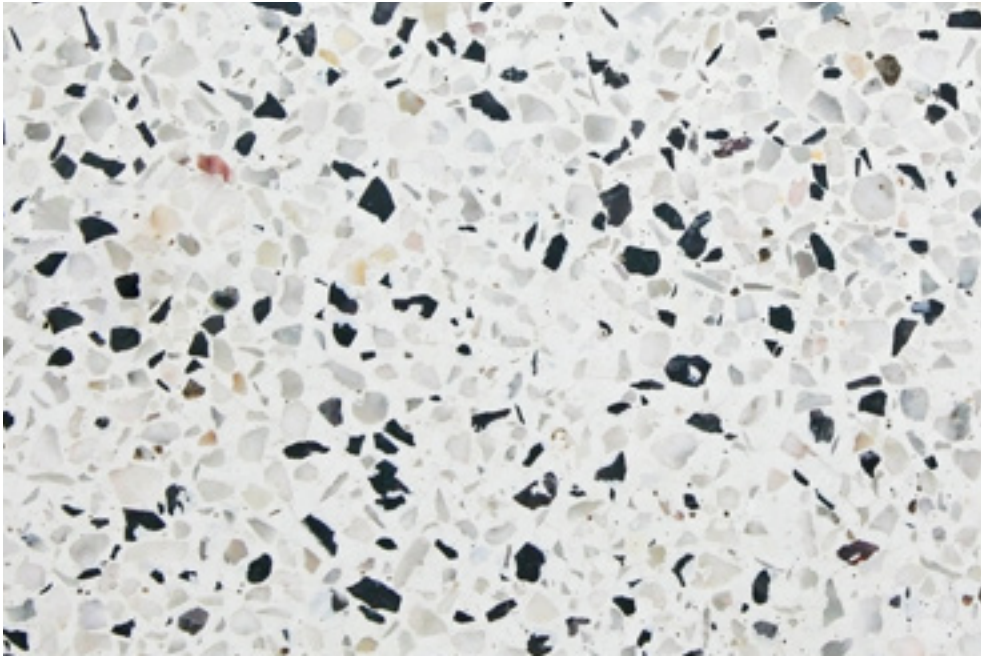
WT242 ROMAN PINK WHITE (A)



WT121 SIERA GREY (A)

TERRAZZO OPTIONS
ONLY AVAILABLE IN
DAMO / CONNECTICUT

MATERIALS



WT240 ICEWHITE STONE (A)



CONTACT

EUROPEAN SALES & HEAD OFFICE

Vijfseweg 84
8790 Waregem
BELGIUM

T +32 56 62 51 90
info@pr-living.be
www.pr-living.com

PR-LIVING CHINA DOMESTIC

Changle Road, Lane 672, No. 33
Jingan District
Shanghai
CHINA

T +86 (0)21 52289251
china@pr-living.com
www.pr-living.com

PR-LIVING ASIA

Changle Road, Lane 672, No. 33
Jingan District
Shanghai
CHINA

T +86 (0)21 5228 9251
info@pr-living.com
www.pr-living.com

CONTENTS

Intro

pp. 4-13

Index

pp. 15

Contemporary Furniture

pp. 17-77

Dining Tables

pp. 79-87

Create your table

pp. 89-104

Carpets

pp. 107-116

Material Options

pp. 119-137

Contact

pp. 140



BELGIUM - 1960

WWW.PR-LIVING.COM